

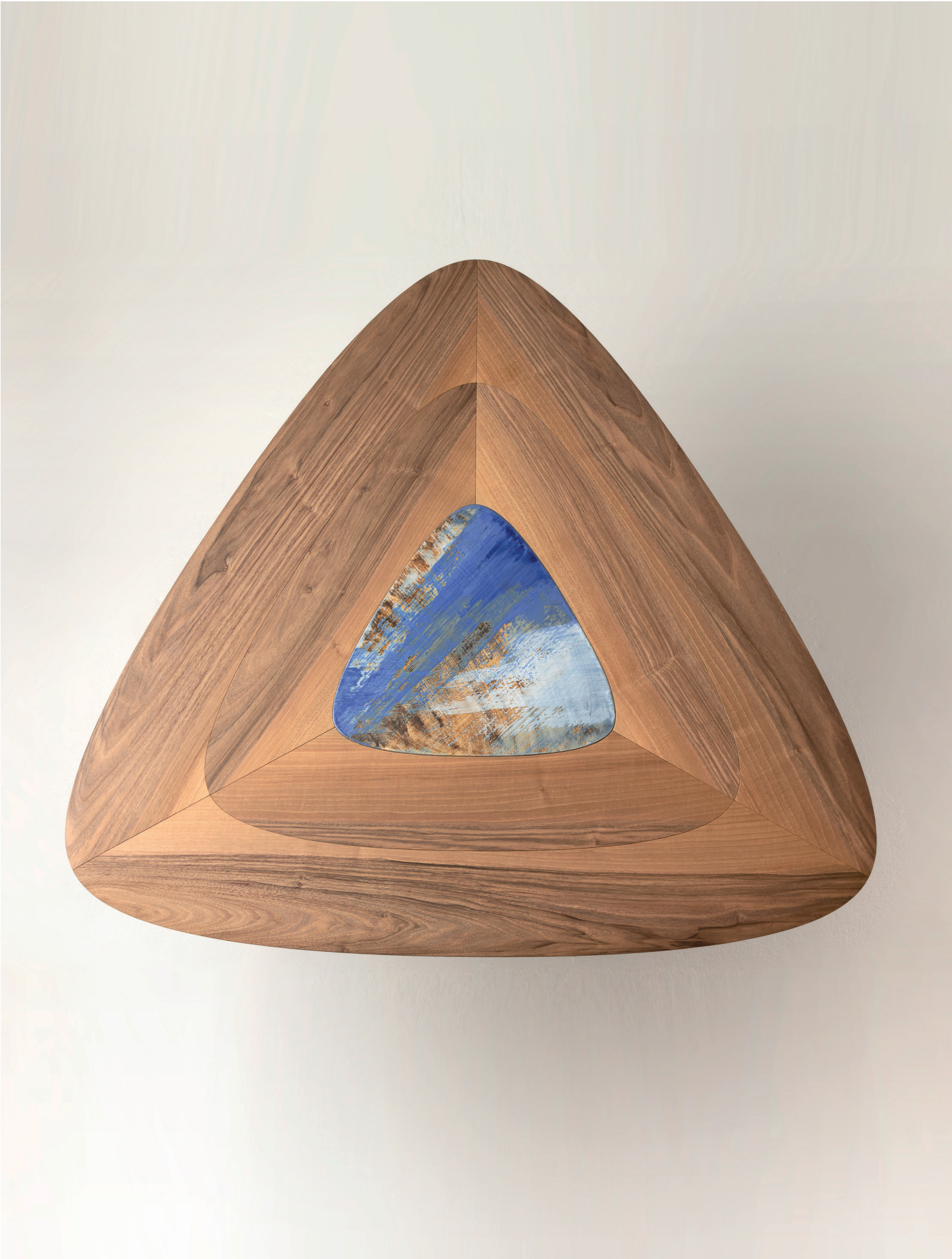
ALICE Dining Table - 3 people

Solid walnut & ceramic | H. 75 × L. 123 × l. 116 cm | H. 29.5 × W. 48.5 × D. 45.8 in



PIERRE YOVANOVITCH

MOBILIER





ALICE Dining Table



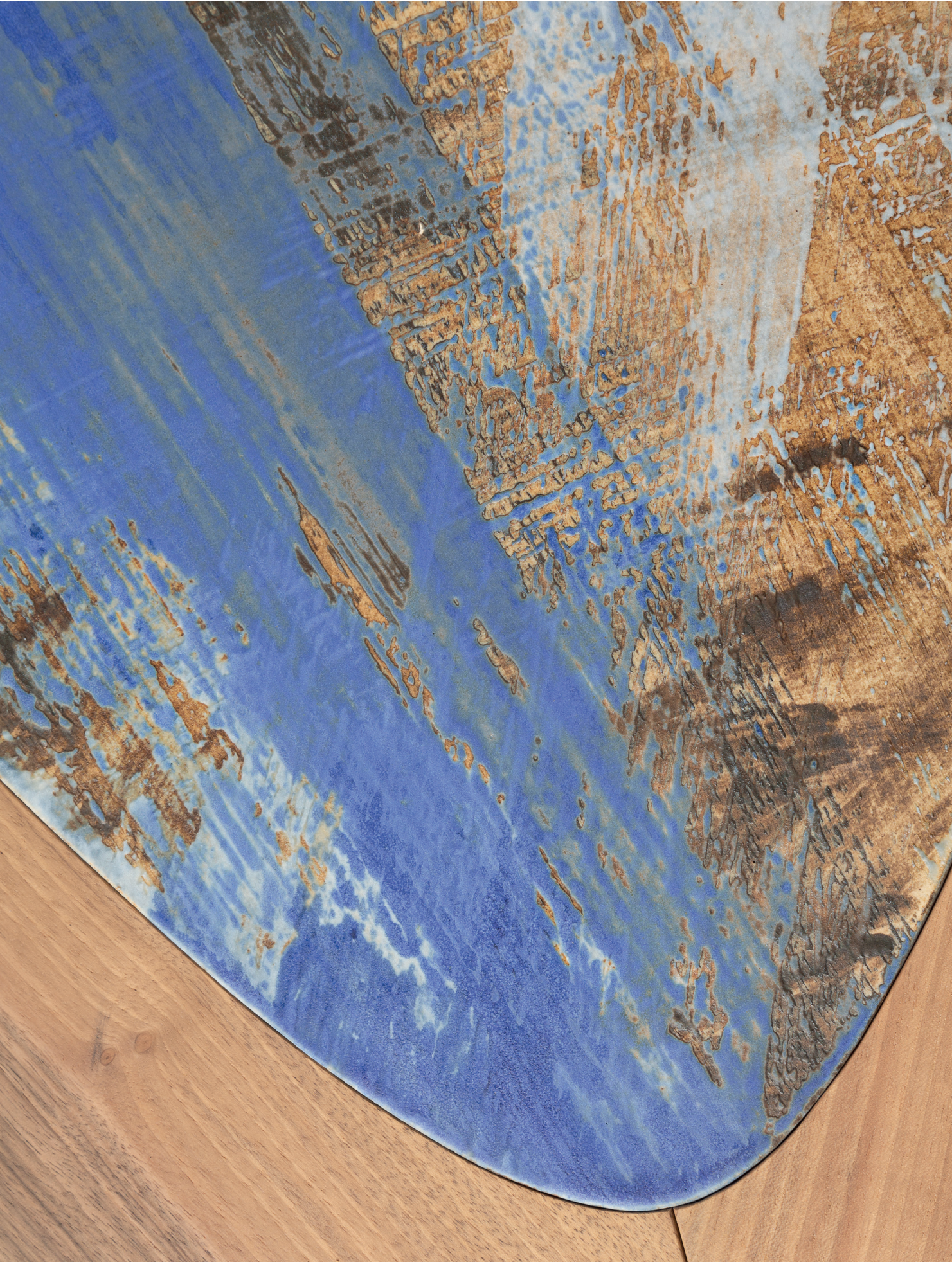
P Y
MOBILIER

ALICE Dining Table



P Y
MOBILIER

ALICE Dining Table

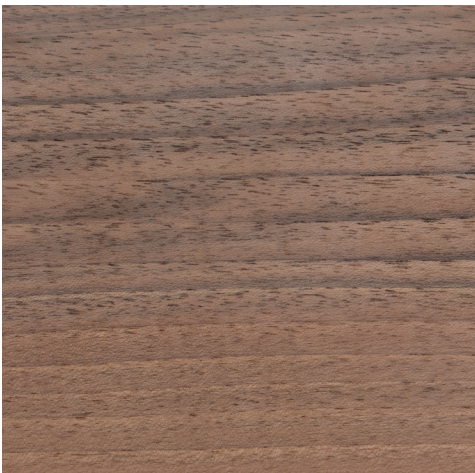


P Y
MOBILIER

WOOD ESSENCES

1. Varnished Solid Walnut

Solid wood is a natural product that responds to changes in temperature and humidity by expanding and contracting. Variation in graining, color and texture are inherent and to be expected.



1

GLAZED CERAMIC

- 1. Comporta White
- 2. Monet Blue
- 3. Soulages Black

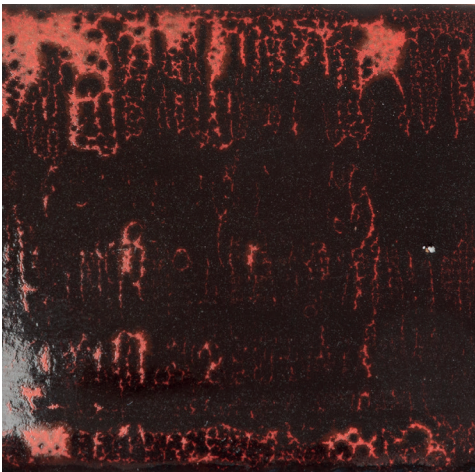
All ceramics are handmade and integrate traditional methods to texture, fire and glaze one piece at a time. Expect minor distinctions that will make each piece unique and truly one of a kind.



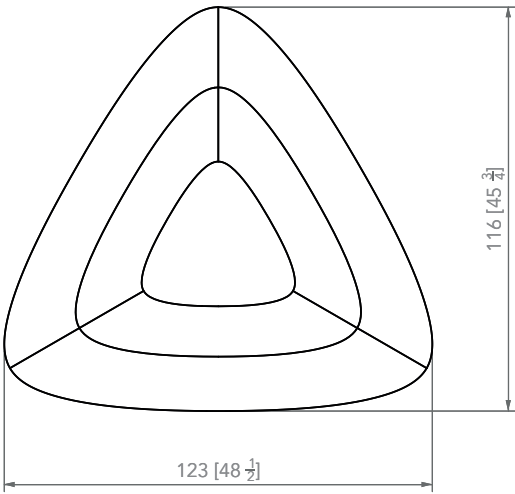
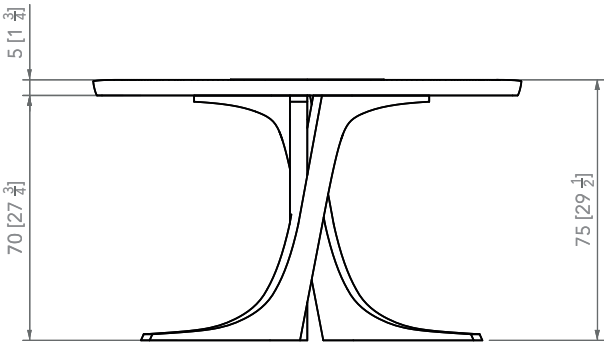
1



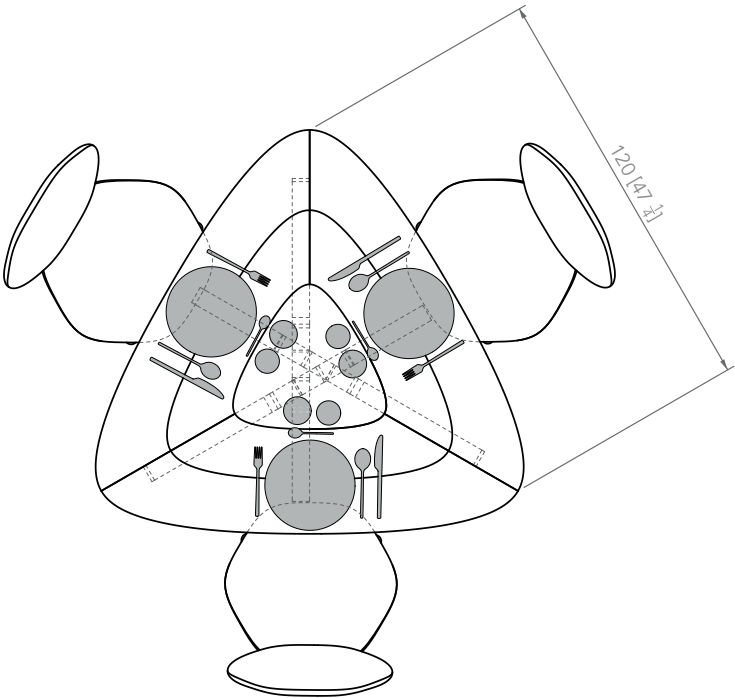
2



3



Chair model used in plan: HEXA Chair



PIERRE YOVANOVITCH
MOBILIER