

Johnny Guitar Double Bench

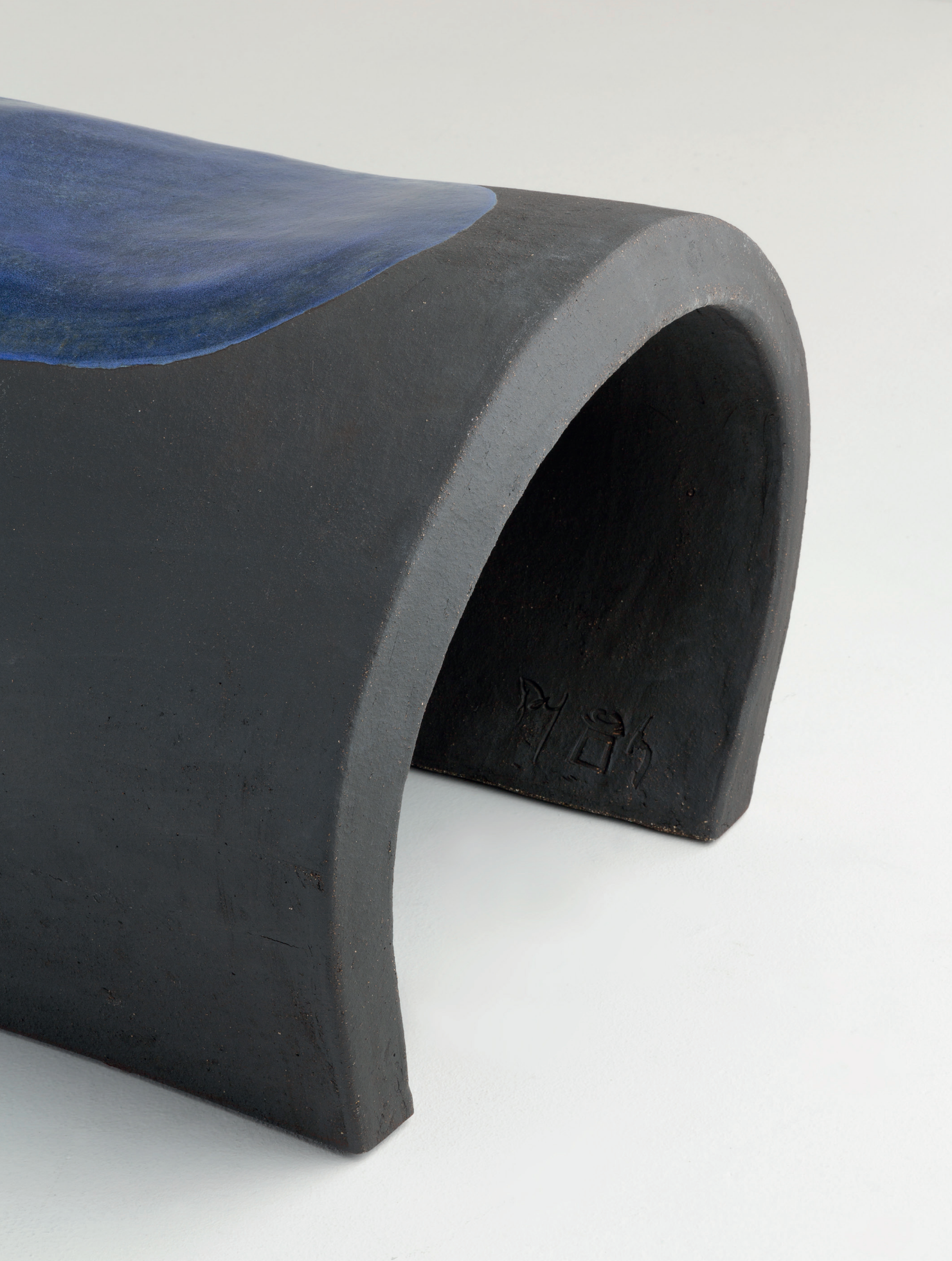
Element 1 | Ceramic | H. 47 x L. 69 x l. 50 cm | H. 18.5 x L. 27 x l. 19.8 in
Element 2 | Ceramic | H. 47 x L. 61 x l. 50 cm | H. 18.5 x W. 24 x D. 19.8 in

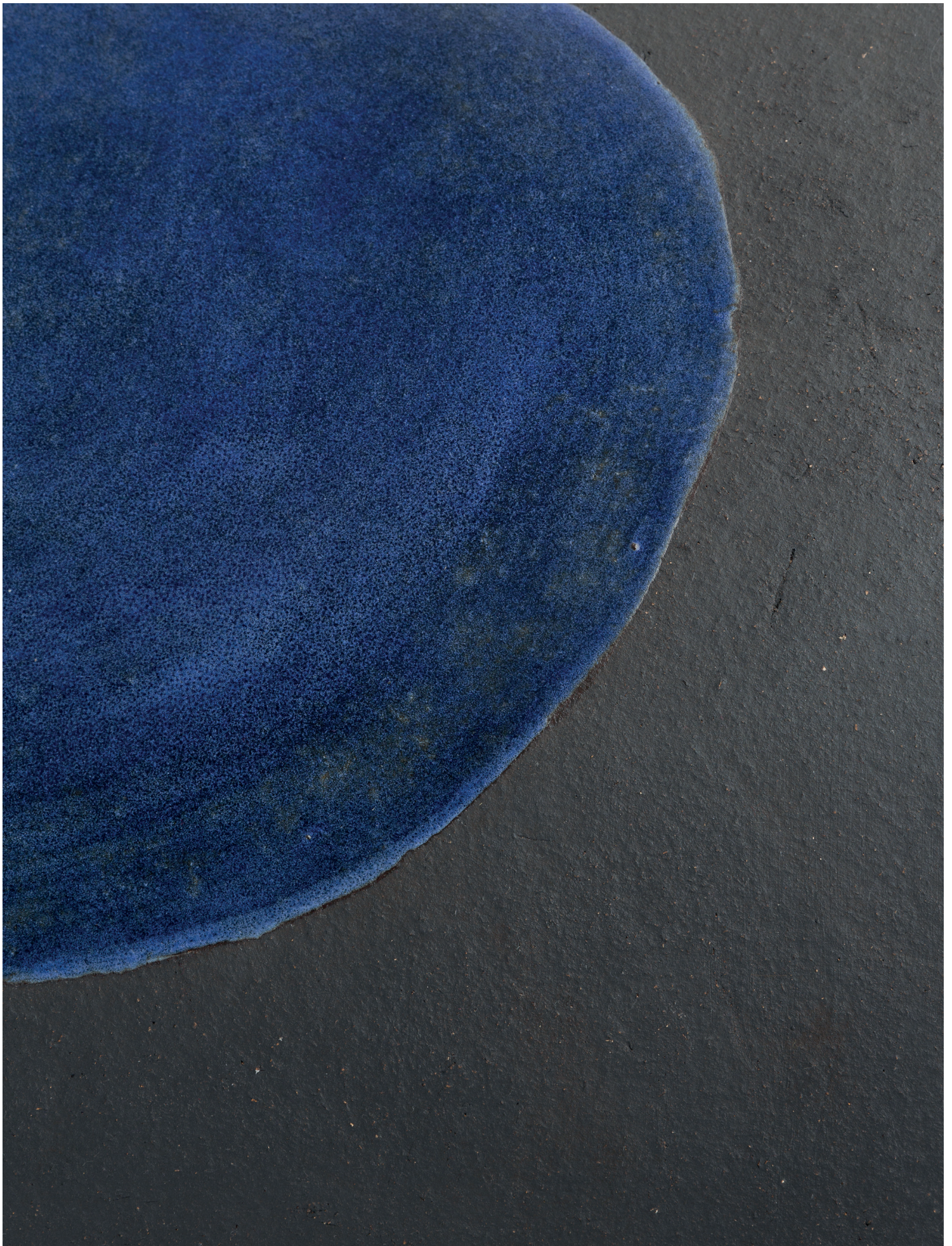


PIERRE YOVANOVITCH

MOBILIER







P Y

MOBILIER

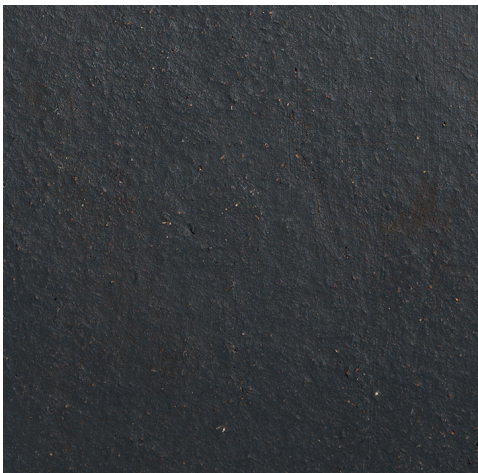


RAW CERAMIC

- 1. Chamotte Clay
- 2. Black Chamotte Clay



1

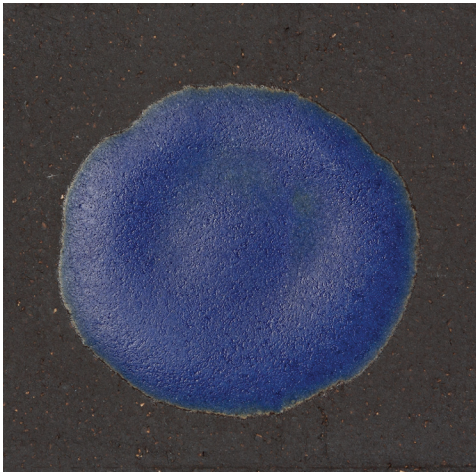


2

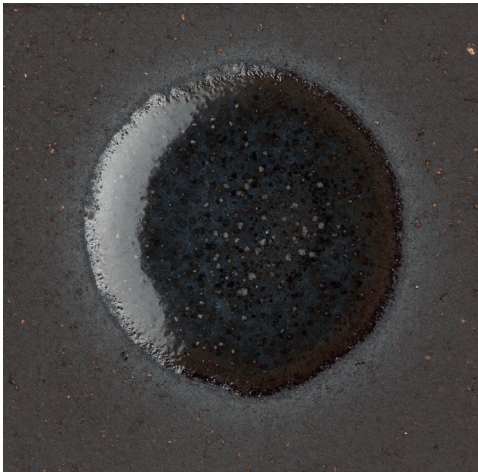
GLAZED CERAMIC

- 1. Greek Blue
- 2. Contamination Black
- 3. Caramel

All ceramics are handmade and integrate traditional methods to texture, fire and glaze one piece at a time. Expect minor distinctions that will make each piece unique and truly one of a kind.



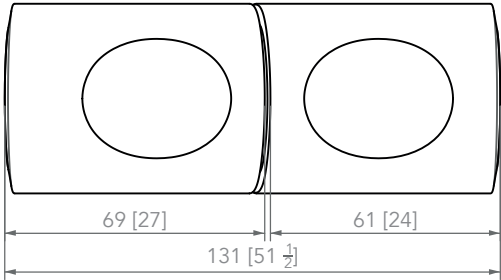
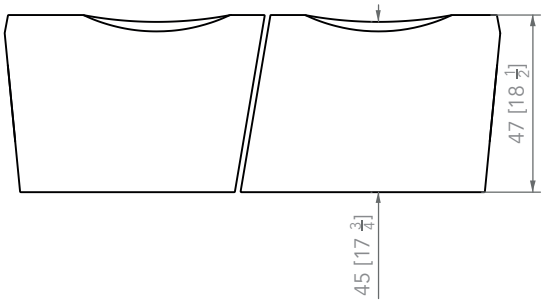
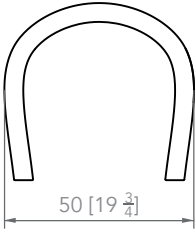
1



2



3



PIERRE YOVANOVITCH
MOBILIER