



PIERRE YOVANOVITCH

MOBILIER





LITTLE ZOU! Table Lamp

Materials

HAND-BLOWN GLASS

1. Wrinkled White

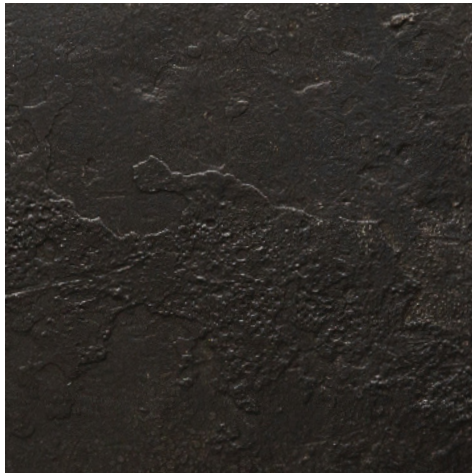
All glass is handmade using traditional methods one piece at a time. There may be variances in shape and color between pieces. Expect minor distinctions that will make each piece unique and truly one of a kind.



1

METAL

1. Patinated & Waxed Bronze



1

P Y

MOBILIER

Designed for indoors
On/Off In-Line Switch

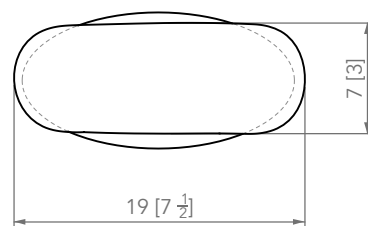
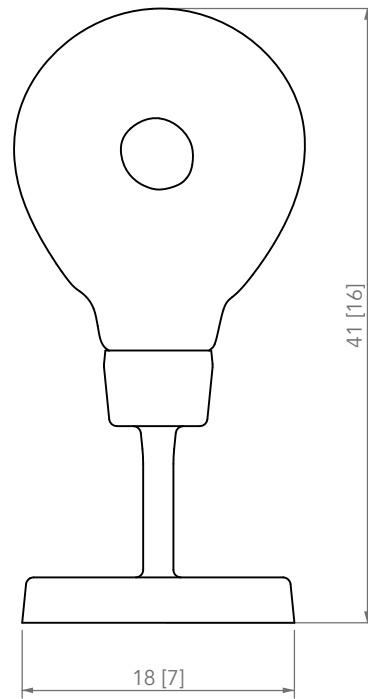
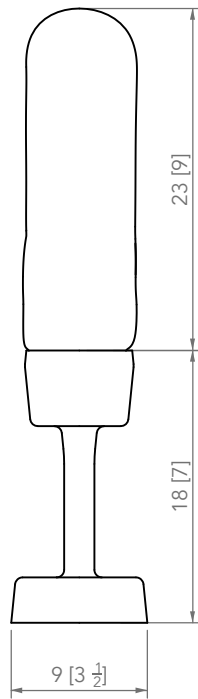
LED Disk

US
110-120 V

CE
220-240 V

Dimmable
2700K

Must be replaced by a professional



PIERRE YOVANOVITCH
MOBILIER